



EncoreHomes.ca

The Azalea II

1,457 Sq. Ft. (+601 Suite)

3 Bedroom (+1 in Suite)

2.5 Bath (+1 in Suite)



The Azalea II

1,457 Sq. Ft. (+601 Suite)

Expect to be Impressed!



TEL: 780-472-8362
FAX: 780-472-8343



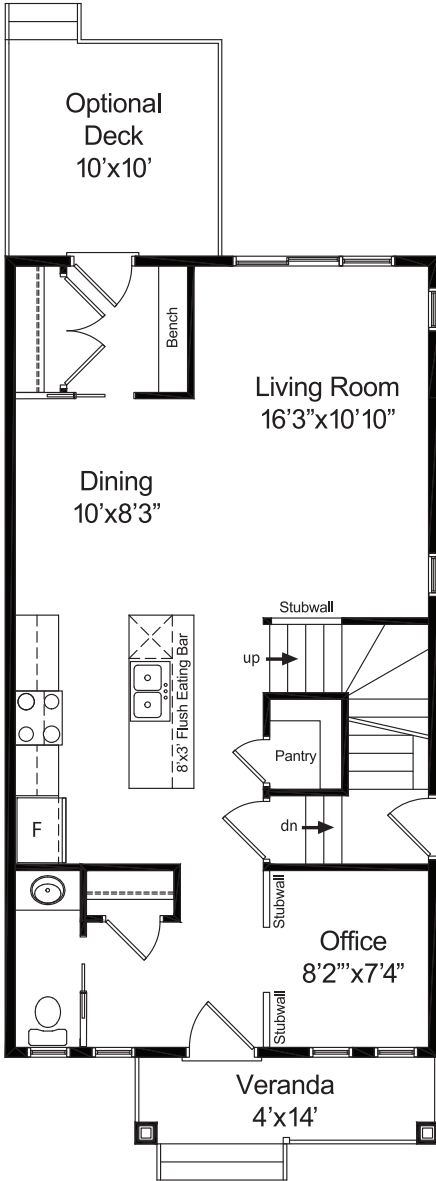
info@encorehomes.ca
EncoreHomes.ca



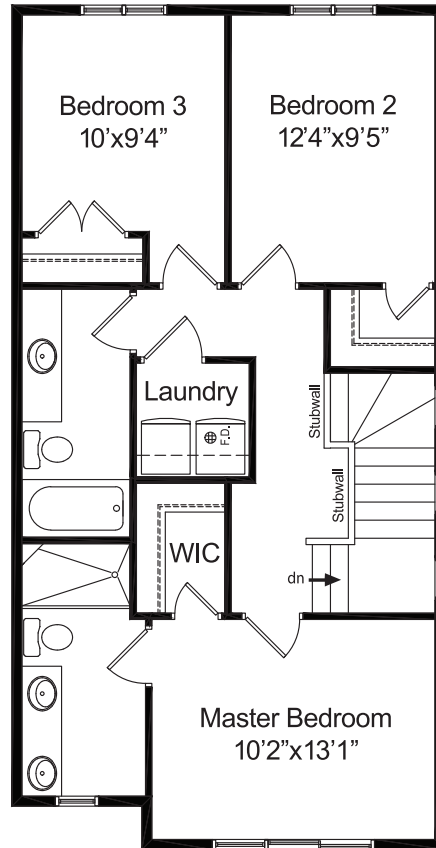
11344 - 119 Street
Edmonton, AB T5G 2X4

The Azalea II

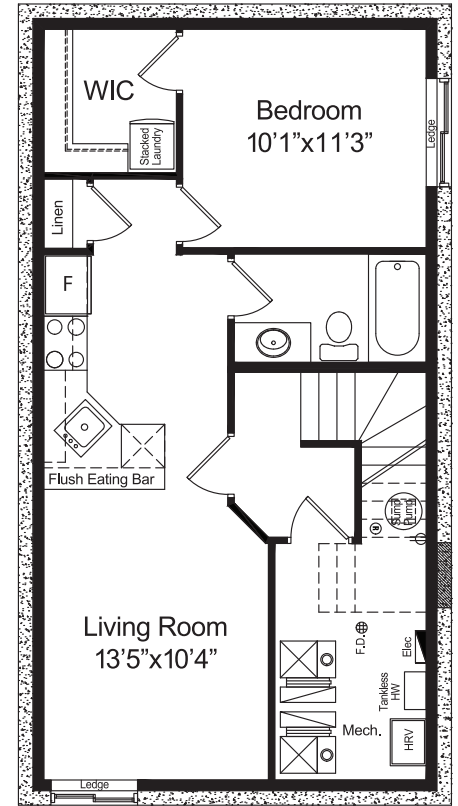
1,457 Sq. Ft. (+601 Suite)



Main Level
740 sq.ft.



Upper Level
717 sq.ft.



Secondary Suite
601 sq.ft.

Alternate Elevation:



NOTE: Floor Plan documents are for sample purposes only. Elevations, dimensions, and layout are all subject to change without notice. Please contact us for details specific to actual properties.

Expect to be Impressed!