

THE BROOKLYN AT Blatchford

UNIT A - 1,500 sq.ft.



ENCOREHOMES.CA



THE BROOKLYN

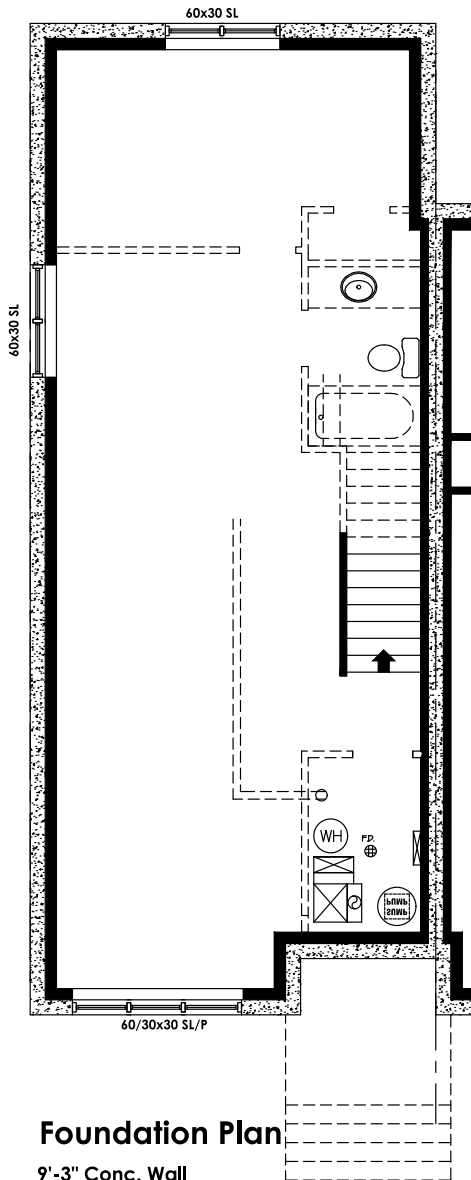
AT Blatchford



UNIT A UNIT B UNIT B UNIT B UNIT C

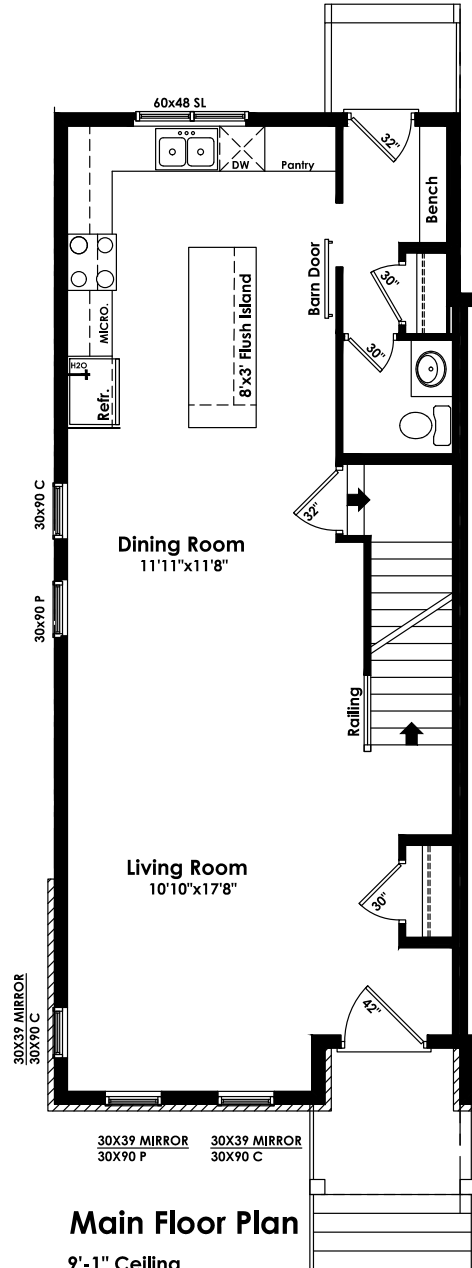


Blatchford
The Brooklyn at Blatchford
UNIT A



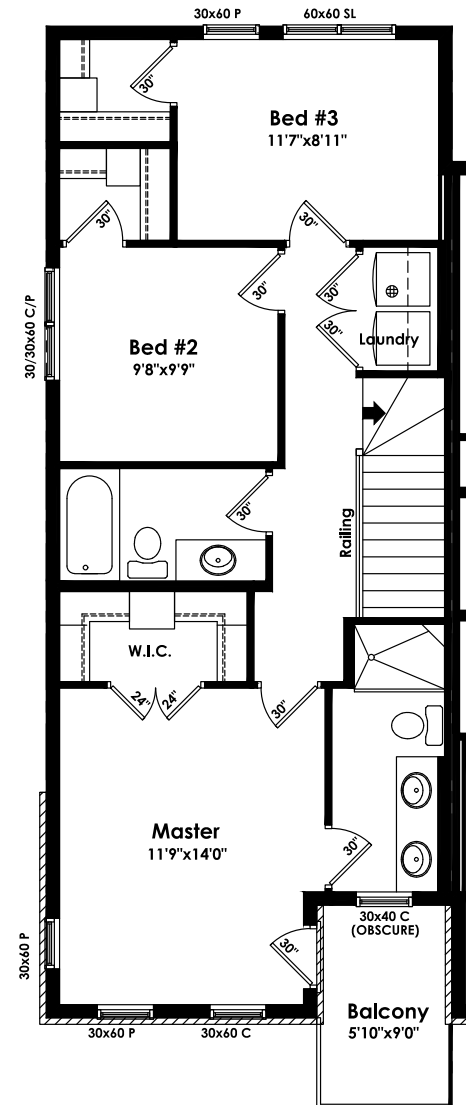
Foundation Plan

9'-3" Conc. Wall



Main Floor Plan

9'-1" Ceiling
777 sf



Second Floor Plan

8'-1" Ceiling
723 sf

UNIT A



END UNIT

FULL UNFINISHED
BASEMENT

9' CEILINGS

3 BEDROOMS

GRANITE
COUNTER-TOPS

PRIVATE
BALCONY

