

THE BROOKLYN AT Blatchford

UNIT B - 1,520 sq.ft. w/ Basement Suite - 682 sq.ft.



ENCOREHOMES.CA



THE BROOKLYN

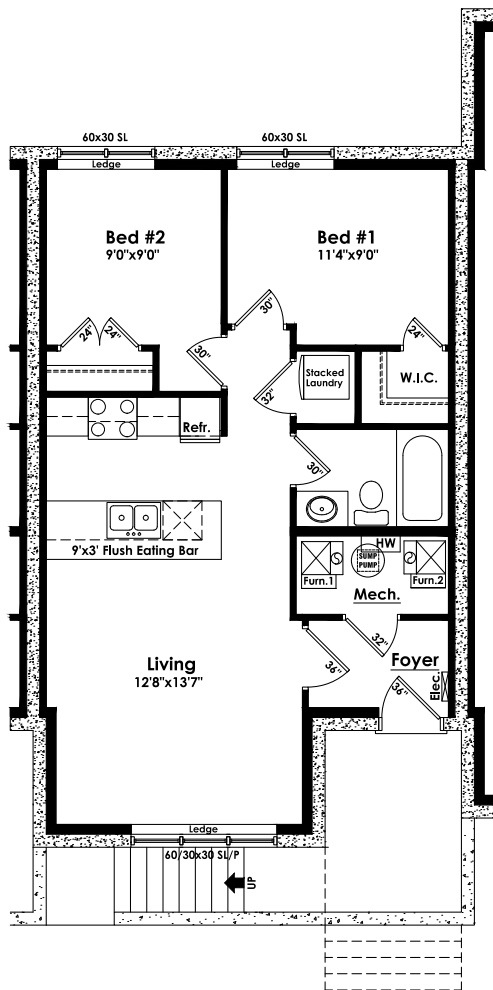
AT Blatchford



UNIT A UNIT B UNIT B UNIT B UNIT C

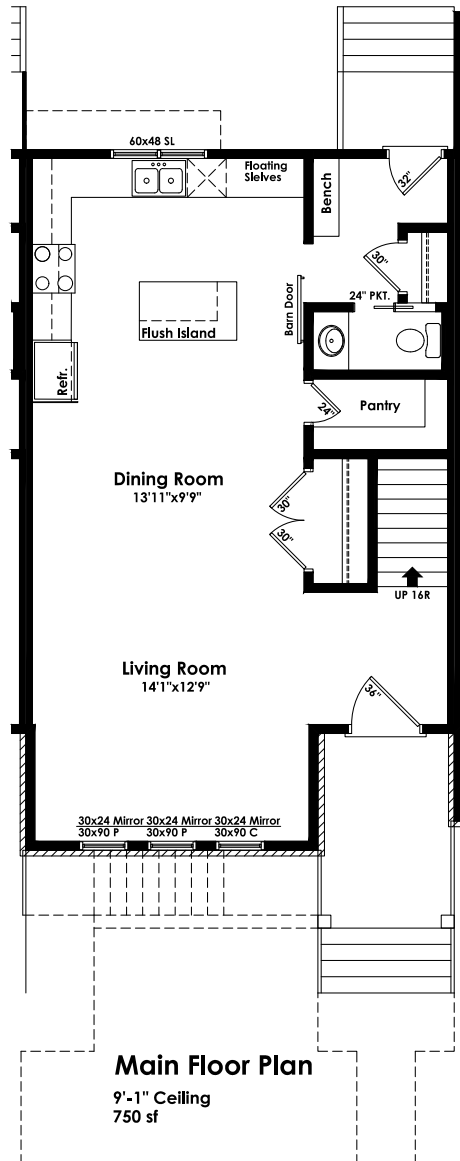


Blatchford
The Brooklyn at Blatchford
UNIT B



Secondary Suite

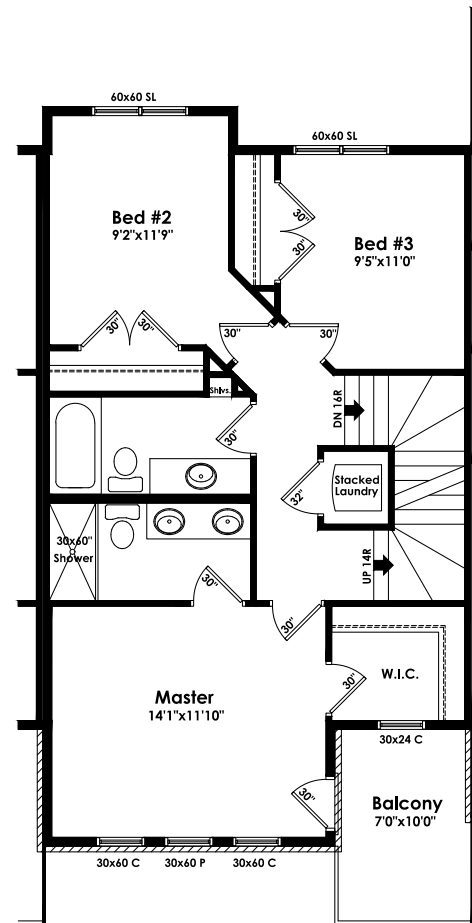
9'-3" Conc. Wall
682 sf



Main Floor Plan

9'-1" Ceiling
750 sf

INCLUDES: 309 SQ.FT. ROOF TOP PATIO



Second Floor Plan

8'-1" Ceiling
770 sf

UNIT B



SECONDARY
RENTAL SUITE

SEPARATE
ENTRANCES

9' CEILINGS

ROOFTOP DECK

GRANITE
COUNTER-TOPS

PRIVATE
BALCONY

